

## Discoverers Newsletter November/December 2018



### WELCOME

Well what a fantastic month it has been for the Discoverers room. We all dressed up in our pyjamas and enjoyed lots of games and dancing for Children in Need. We raised £142 so a big thank you to all involved.

We have been looking at the stories The Gingerbread Man and the Leopard Who Found His Spots. We have been doing activities that tie in with the stories. The children have also had lots of fun doing some baking, we took into consideration those of our children who have allergies so were careful choosing ingredients.

The staff and children have been working really hard on our Jolly Phonics, we have been singing the songs and doing the actions.

We have been doing a lot of texture play using different textures to explore. The children loved playing and exploring in the coloured rice the children add objects in the rice such as compare bears. This allows the children to categorise and count the objects.

Thanks, The Discoverers Team

Ofsted rated GOOD in all areas

A consistent approach to Early Years  
for the last 10 years 2008, 2011, 2013,  
2017

  
Ofsted  
Good  
Provider

### Nut Allergies

Just a reminder that we have children in the setting with allergies so please make sure any snacks or lunches that are sent in are nut

### DIARY DATES

Closed for Training days: 4<sup>th</sup> January 2019, 15<sup>th</sup> April 2019, 26<sup>th</sup> July 2019

Closed Bank Holidays: 19<sup>th</sup> April 2019, 22<sup>nd</sup> April 2019, 6<sup>th</sup> May 2019, 27<sup>th</sup> May 2019

Jigsaws Christmas party 18th December

Christmas: Close Friday 21<sup>st</sup> December  
open January 7<sup>th</sup> 2019

Parents Evening January (tbc)

### Party Time!



Tuesday 18<sup>th</sup> of December will be our Christmas Party. A visit from Santa and his friends, Elf pictures and a burst of carol song from our Discoverers. All children booked in on this day will be involved and Emma will be preparing a lovely Christmas dinner. If you do not normally attend parents and children are welcome to pop in and see our visitor deliver gifts or there maybe some spaces for extra bookings.



## Names in clothes please

Could we ask all parents to name clothes at Jigsaws at the moment a lot of children who have the same coats, hats and wellingtons.

## Important Safety Reminder

Please could we ask that all parents close and lock the front gate on the way in and out to keep the children safe. Thank you.

## Child Assessments

Your child's assessments will be published in December. These give you an overview of how your child is doing in all areas of learning. They also share with you any concerns we have and targets we are working on for you to help with at home.

There will be a parents evening in early January to discuss these assessments with staff. Date to follow.

## **Home Learning Bags**

We have home learning bags for you to loan for 50p with activities for you to do at home. These are in the front reception area. Please ask your room supervisor if you wish to use one.



You can choose from four bags:

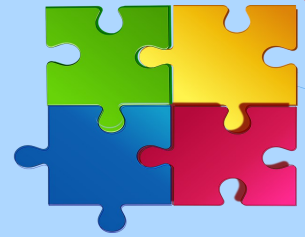
- Shape, size and pattern (Explorers and Discoverers)
- Numbers (Explorers and Discoverers)
- Reading and writing (Explorers and Discoverers)

## **Jigsaws Session Start and Finish Time Reminder**

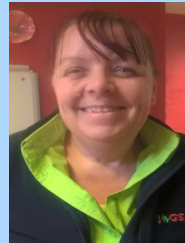
Please note that children who are due to start at 9am must not be brought in before this time. We have a duty of care to your children and cannot meet this if we do not have the correct amount of staff for the children on the premises outside of the booked times.

Also children need to be collected from Jigsaws before you collect children from school as the afternoon session ends at 3pm.

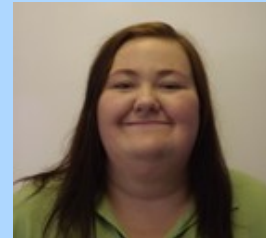
JIGSAWS CHILDCARE LTD  
01937 558951 [www.jigsawschildcare.co.uk](http://www.jigsawschildcare.co.uk)



## **Meet the Discoverers team**



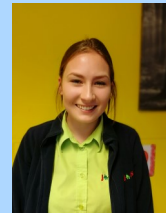
Linda Ross  
Room Supervisor



Kay Scarce  
Practitioner



Amy Elsworth  
Practitioner



Freya Mitchell  
EYE Apprentice



Rebecca Haines Deputy Manager / Outdoor Learning lead

**Nicole Newiss – Operations Manager**

**Helen Smith – Business Manager**

**Are you looking for support with childcare costs?**

Childcare Choices brings together all the government childcare offers in one place for the first time. The new Childcare Choices website makes it easy to find out what's on offer.

Use the Childcare Calculator at [www.gov.uk/childcare-calculator](http://www.gov.uk/childcare-calculator) to see what offers are available to support you and your family or [www.childcarechoices.gov.uk](http://www.childcarechoices.gov.uk)