

Discoverers Newsletter December 2018/January 2019

WELCOME

Welcome back to everyone we hope you have had a lovely break. We are very excited about starting our outdoor learning and Forest Schools with Becki, if you have any questions about this please just ask us or email beckihaines@jigsawschildcare.co.uk

Over the holidays Linda looked at the 'lost property' tub we have in the room - there are 20+ hoodies/jackets that belong to someone, if possible please come in and have a look through them to see if any belong to your child. We are desperately short of spare leggings/joggers for those times we might need extra clothes - if anyone is having a clothes sort out we would appreciate any spares you may otherwise dispose of. Thank you.

This week we have been busy doing lots of interesting things in the discoverers, we have been practising our climbing and balancing skills on an obstacle course outside. Some of our part time school children were thinking about the 'senses' when exploring the different things in the trays. In one tray there were porridge oats, cinnamon and apples, in the second there was cooked spaghetti, mint leaves and dill, in the third there was rice noodles, lemons and feathers and in the fourth there was crushed bourbons, carrots and broccoli. Children were very focused on using their sense of smell, sight and touch to explore the different things.

Children have also had a fabulous time playing with and exploring different sounds that musical instruments make, we all sat in a circle and played our instruments along to the songs we were singing.

Thanks, The Discoverers Team



Ofsted rated GOOD in all areas

A consistent approach to Early Years
for the last 10 years 2008, 2011, 2013,
2017



Parents Evening

Parents evening is on Thursday 17th January. Please look out for a sheet on the door of the room to book an appointment, or speak to a member of staff.

Forest Schools and Outdoor Learning

For the new year Jigsaws are excited to announce their new Forest Schools and Outdoor Learning curriculum with Becki taking the lead on the new programme. All children who attend the setting will have the opportunity to access Forest Schools. Parents will receive information soon on when their child is attending. Children will need warm clothes, waterproof coat and boots as we will be out in all weathers. Activities during the first week will include a scavenger hunt and flower finding. Any questions contact helen@jigsawschildcare.co.uk

DIARY DATES

Closed Bank Holidays: 19th April 2019, 22nd April 2019, 6th May 2019, 27th May 2019 and 26th August

Parents Evening 17th January 2019

Closed Monday 15th April Training Day

Tuesday 14th May Parents Evening

Friday 26th July Training Day Closed

Monday 2nd September new contracts start

Sunday 29th September OPEN EVENT time TBC

Thursday 3rd October Parents Evening

Monday 28th October Training Day Closed

Close for Christmas 12 noon 24th December

Closed Friday 3rd January Training Day

Open Monday 6th January 2020



ParentZone is an award winning smartphone app for parents. Parents can access information about their child's day at Jigsaws Childcare at a time that suits them best. ParentZone promotes the partnership between parents and Jigsaws to provide two way communications.

The app can be downloaded via Google Play or the App Store on iPhone.

Staff News

We are happy to welcome back Becki from maternity leave who is now busy running Jigsaws Forest Schools and Outdoor Learning programme.

Nut Allergies

Just a reminder that we have children in the setting with allergies so please make sure any snacks or lunches that are sent in are nut free.

Names in clothes please

Could we ask all parents to name clothes at Jigsaws at the moment a lot of children who have the same coats, hats and wellingtons.

Home Learning Bags

We have home learning bags for you to loan for 50p with activities for you to do at home. These are in the front reception area. Please ask your room supervisor if you wish to use one.

You can choose from four bags:

- Shape, size and pattern (Explorers and Discoverers)
- Numbers (Explorers and Discoverers)
- Reading and writing (Explorers and Discoverers)
- Heuristic Play (Crawlers and Explorers)



Important Safety Reminder

Please could we ask that all parents close and lock the front gate on the way in and out to keep the children safe. Thank you.

Jigsaws Session Start and Finish Time Reminder

Please note that children who are due to start at 9am must not be brought in before this time. We have a duty of care to your children and cannot meet this if we do not have the correct amount of staff for the children on the premises outside of the booked times.

JIGSAWS CHILDCARE LTD
01937 558951 www.jigsawschildcare.co.uk

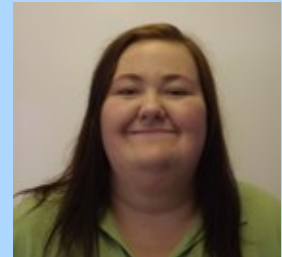


Meet the Discoverers team



Linda Ross

Room Supervisor



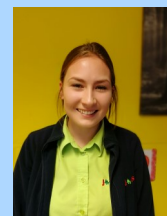
Kay Scarce

Practitioner



Amy Elsworth

Practitioner



Freya Mitchell

EYE Apprentice



Rebecca Haines Deputy Manager/Outdoor Learning Lead

Nicole Newiss – Operations Manager

Helen Smith – Business Manager

Are you looking for support with childcare costs?

Childcare Choices brings together all the government childcare offers in one place for the first time. The new Childcare Choices website makes it easy to find out what's on offer.

Use the Childcare Calculator at www.gov.uk/childcare-calculator to see what offers are available to support you and your family.

To find out more about the new and existing offers, and how